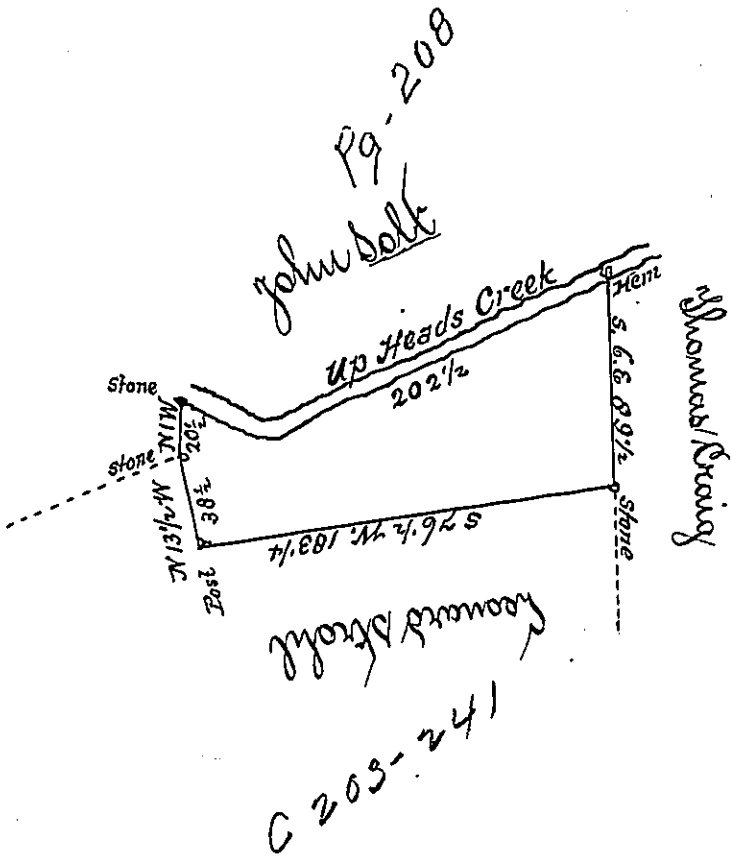


The bearing and distance **207**  
up the south side of Heads/  
creek are

- 1. S 74° E ... 37
  - 2. N 59 1/2° E ... 165 1/2
- 202 1/2



By virtue of a Warrant dated the 9<sup>th</sup> April 1794 surveyed the 22<sup>d</sup> May 1794 to Paul Solt the above described tract of land situate on the south side of Heads creek in Downing Township Northampton County containing sixty seven acres three quarters and the allowance of six p Cent &c

To Daniel Brodhead Esquire  
Surveyor General

P. Geo. Palmer D.S.  
*[Signature]*

IN TESTIMONY that the above is a copy of the original remaining on file in the Department of Internal Affairs of Pennsylvania, made conformably to an Act of Assembly approved the 16th day of February, 1833, I have hereunto set my Hand and caused the Seal of said Department to be affixed at Harrisburg, this first day of October 1901.

*[Signature]*  
Secretary of Internal Affairs.